



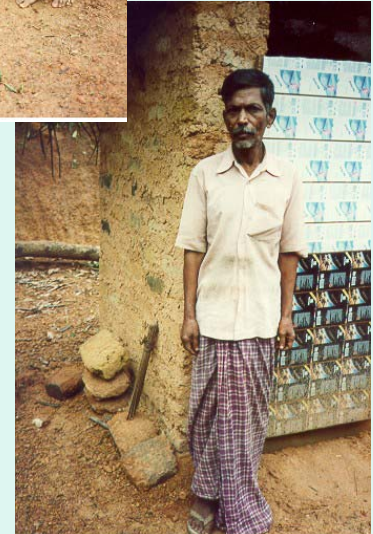
Preventing corruption in a sanitation programme

Kerala, India

Socio-Economic Units Foundation

The programme

- 200,000 poor families.
- Focus
 - Household toilets, consistently used, clean, sustained
 - Hygiene practices
 - Pro-poor, women-friendly
- Stakeholders: poor families, NGO, local government, local committees and groups



Typical problems in sanitation programs

- Undeserving people benefit from subsidies
- Over charging for construction.
- Poor construction and inferior materials.
- Funds and materials diverted.

Estimate that 20% to 30% of funds diverted.

STRATEGIES USED

Access to
information +
knowledge

Extra checks by
different groups

Action taken at
lowest level
with referrals

Participation and
capacity building

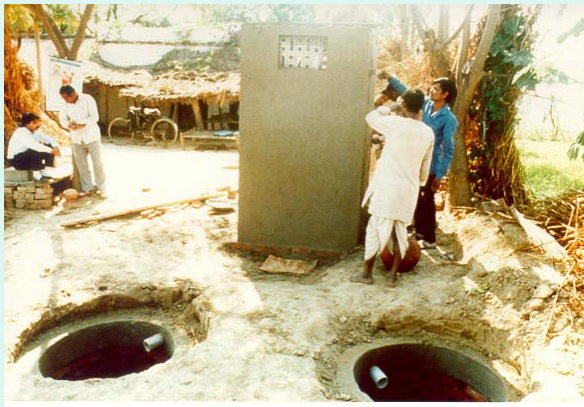
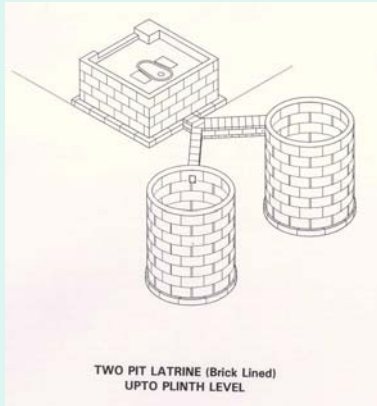
Households
Local government

Water/sanitation
committees,
Women's groups
Youth groups

NGO,
Masons,
Women masons
Suppliers

***Preventing
corruption***

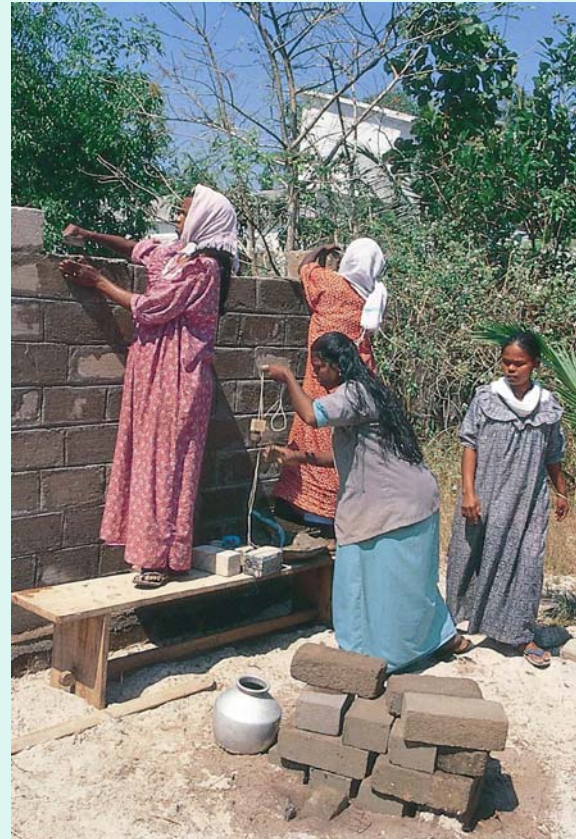
Information and knowledge



- Program rules are known by all
- Technology, construction time and costs known by all

Information/knowledge for construction

- **Construction checklists held by stakeholders for construction**
- **Women masons program**



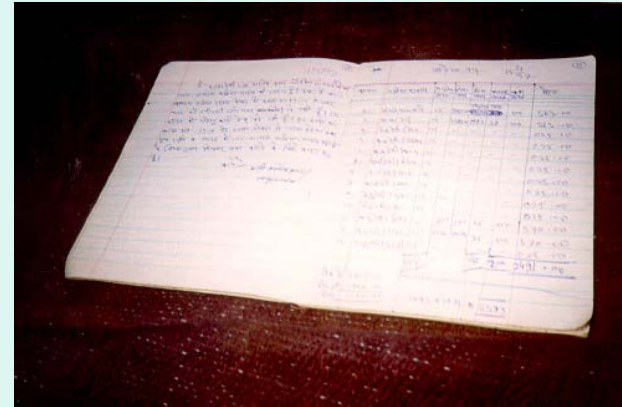
Extra checks to ensure access by poor people

- **Socio-economic mapping**
- **Extra checks: visit households**
- **Public posting of households eligible for subsidies**



Extra checks: money + tenders

- **Joint bank accounts**
- **Independent audits**
- **Double signatures on receipts (the person giving and taking funds)**
- **Tenders (3 tenders required with public and open selection)**
- **Surprize, spot checks of suppliers**



If there was a problem, then

it was important to

- **Take action or**
- **Refer complaints to someone who will act to improve the situation.**

Results: working to prevent corruption

other programmes 1995	average unit costs
World Bank	Rs. 3500
Rural Development Department	Rs. 3000
Fisheries Department	Rs. 3500
CAPART-assisted NGO programmes	Rs. 3000
Panchayat/SEU programme	Rs. 2000

- reduces costs
- increases quality
- popular program with families and local politicians
- **Became model for other programs**



Thank you

**Kochurani Mathew,
Socio-Economic Units Foundation,
Kerala, India.**